

Daily Derivatives & Market Report

CONTENTS

Page No.	Particulars
2	Market Summary
3	Nifty Futures – Derivatives Snap
4	Bank Nifty Futures – Derivatives Snap
5	Activity in Nifty Options
6	What do Nifty Technical suggest
7	Derivative Analysis
8	Disclaimer

Index Trend Analysis

Pivot(Daily)	Close	S2	S1	Pivot	R1	R2	Daily	Weekly	Monthly
Nifty	11521	11474	11497	11527	11550	11580	Buy	Buy	Neutral
Sensex	38387	38224	38305	38398	38479	38571	Buy	Buy	Neutral
Nifty Futures	11557	11510	11534	11557	11580	11603	Buy	Buy	Neutral
Bank Nifty	29832	29532	29682	29784	29934	30035	Buy	Buy	Neutral
CNX IT	15599	15449	15524	15630	15705	15810	Neutral	Neutral	Buy
CNX Midcap	17847	17729	17788	17879	17938	18028	Buy	Neutral	Neutral
CNX Small Cap	6591	6549	6570	6601	6621	6652	Buy	Neutral	Sell

Market Summary

Domestic Indices	Close	Points	% Chg
SENSEX	38386.8	23.3	0.1
NIFTY	11521.1	-11.4	-0.1
MIDCAP	15165.7	-54.3	-0.4
SMLCAP	14824.5	-48.9	-0.3
BSEFMC	11730.9	-58.7	-0.5
AUTO	19039.2	-271.7	-1.4
POWER	1983.9	-30.9	-1.5
REALTY	2049.3	44.2	2.2
BSE IT	15266.2	141.4	0.9
BANKEX	33401.6	-9.5	0.0
OILGAS	15001.1	-346.8	-2.3
METAL	11185.1	-115.2	-1.0

Currency Futures	Close	Pre. Pts	% Chg
27-Mar-19 EUR-INR	78.26	78.50	-0.31
27-Mar-19 USD-INR	68.86	69.04	-0.27
27-Mar-19 GBP-INR	91.16	91.79	-0.69
27-Mar-19 JPY-INR	61.81	62.12	-0.50

Advance/ Decline	Adv	Dec	Un Ch.
NSE	690	1153	96
BSE	1112	1561	182

FII/DII Capital Mkt*	Buy	Sell	Net
FII	7252	5480	1771
DII	3319	4642	(1323)

*NOTE: - FII AND DII data figure is provisional

Market Commentary

Indian equity benchmarks ended flat on Wednesday after seven days rally. The markets made a cautious start but managed to keep their heads above water for the most part of the session, amid reports that the government has given a major relief to startups by enhancing definition of startups. It has decided to relax angel tax norms for startups, including increasing the investment limit to Rs 25 crore for availing income tax concessions by startups. Traders were positive, as the Vice President of India, M. Venkaiah Naidu expressed the hope that 'in all our countries, we would be able to translate economic growth into inclusive, sustainable development' and referred to Indian government's resolve to transform governance and ultimately the lives of the people. Adding relief on the street, India's Ambassador to the US Harsh Vardhan Shringla said that India's growth in last five years has been transformational and the country is all set to emerge as a \$5 trillion economy in the next five years.

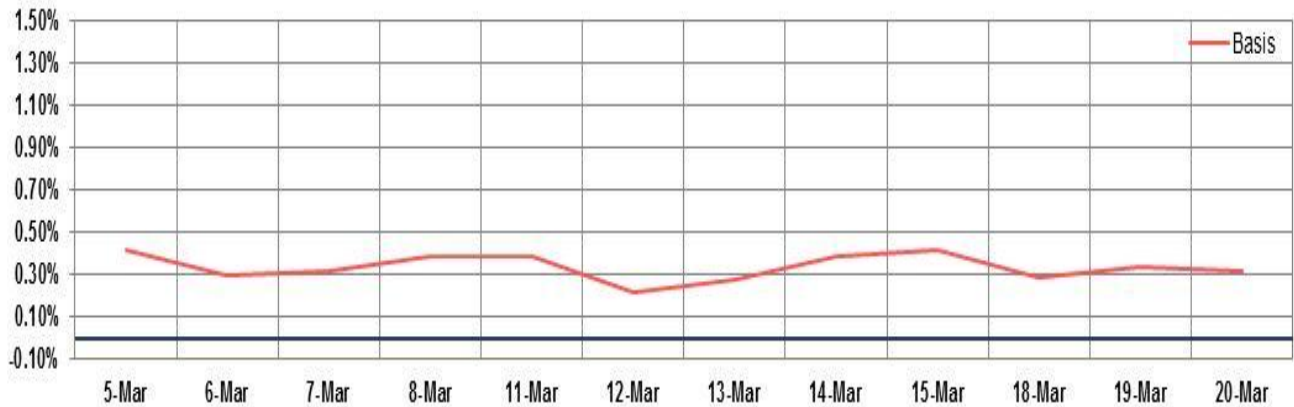
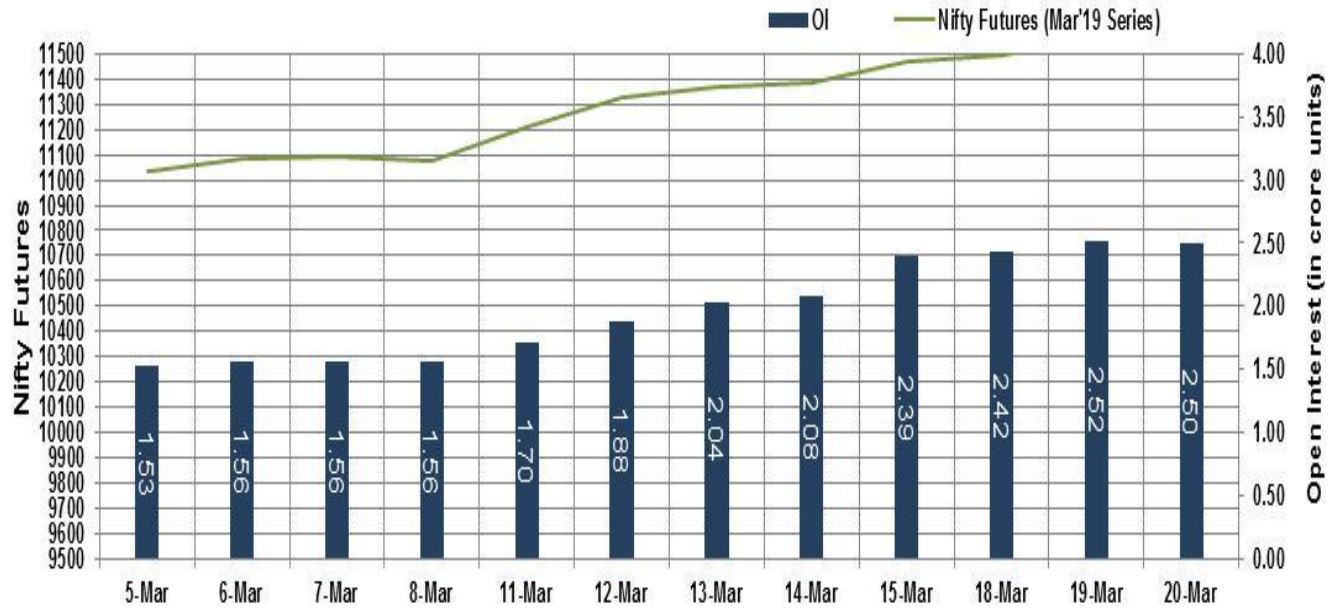
On the global front, European markets were trading in red, as Eurozone construction output fell in January after rising in the previous two months, reflecting declines in both building and civil engineering segments. The data from the statistical office Eurostat showed that construction output declined a calendar and seasonally adjusted 1.4 percent month-on-month in January, reversing a 1.1 percent rise in December. Output grew 0.3 percent in November. Asian markets ended mixed, as investors awaited a US Federal Reserve policy statement and a media report on Sino-US trade talks dented sentiment.

Market Turnover & FII Derivative Data

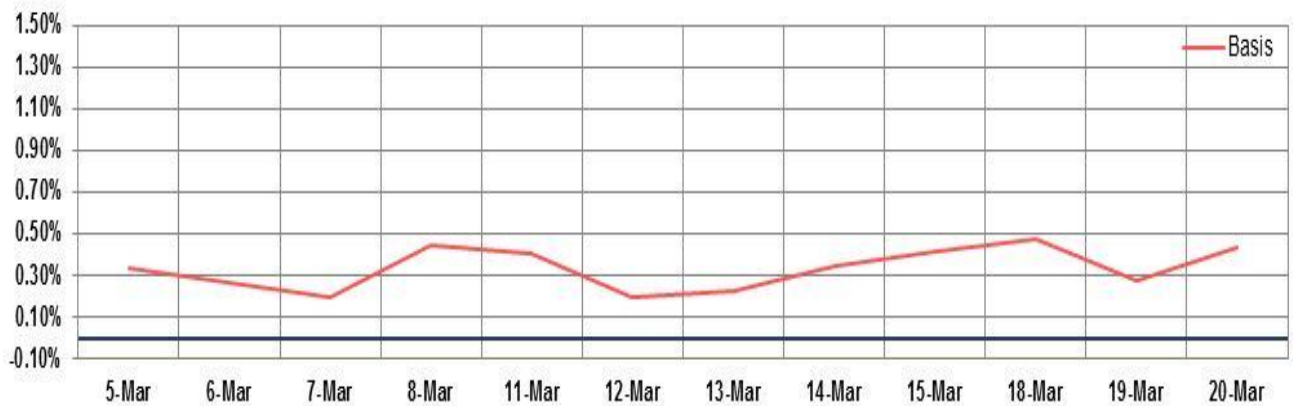
Market TO	Current	Previous	Net%
BSE CASH	2900	9189	(68)
NSE CASH	35525	34191	4
NSE FO	1885084	1070873	76

FII Derivatives	Buy	Sell	Net
Ind. Futures	3744	3693	51
Ind. Options	271574	268770	2804
Stk. Futures	14931	16079	(1148)
Stk. Options	8399	8376	23

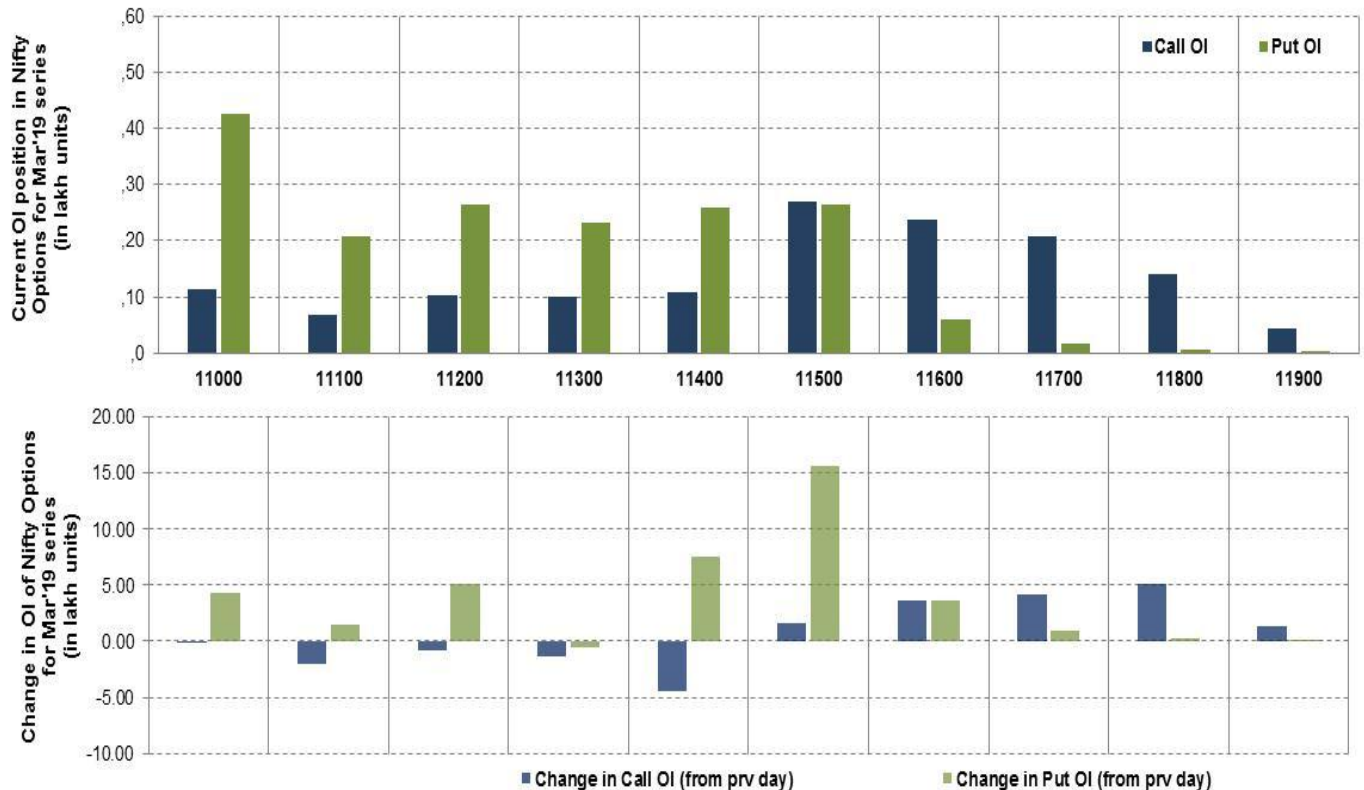
Nifty Futures



Bank Nifty Futures



Nifty Options



Note – Change in OI of Nifty Options refers to change from previous trading day
 Source-NSE, SIHL Derivatives Research (Institutional Equities)

- Among Nifty calls 11,500 SP from the Mar month expiry was the most active call with an addition of 0.15 million in open interest.
- Among Nifty puts, 11,000 SP from the Mar month expiry was the most active put with an addition of 0.43 million open interests.
- The maximum OI outstanding for Calls was at 11,500 SP (2.69mn) and that for Puts was at 11,000 SP (4.25mn)

Nifty Technical & Indices Levels

1-Nifty 50 - 20/03/19
 Avg Avg



Nifty Cash prices have settled at 11521.05 marginal down by 0.10 percent from the previous close. On the upper side it has resistance of 11600 and 11650 levels, while lower side it has support of 11450 and 11400 levels. Intraday traders should be cautious and take position accordingly.

Fresh Longs ↑ Open Interest ↑ Price					
Script	Prev. OI	Cur. OI	% Chg. OI	LTP	Price % Chg
BHEL	33,450,000	41,062,500	22.76	68.90	0.58
YESBANK	122,953,200	140,175,000	14.01	253.80	1.54
HDFC	25,252,000	28,748,500	13.85	1992.50	0.81
NIITTECH	1,119,750	1,271,250	13.53	1335.95	0.07
Short-Covering ↓ Open Interest ↑ Price					
Script	Prev. OI	Cur. OI	% Chg. OI	LTP	Price % Chg
KTKBANK	14,988,300	14,682,800	-2.04	131.95	0.73
MANAPPURAM	11,052,000	10,734,000	-2.88	124.10	0.40
UNIONBANK	29,400,000	28,497,000	-3.07	89.25	1.42
ESCORTS	2,935,900	2,832,500	-3.52	819.80	0.69
Fresh Shorts ↑ Open Interest ↓ Price					
Script	Prev. OI	Cur. OI	% Chg. OI	LTP	Price % Chg
COALINDIA	24,329,800	36,751,000	51.05	229.50	-2.65
IOC	43,967,000	64,480,500	46.66	155.70	-2.17
ONGC	41,647,500	58,931,250	41.50	150.05	-3.63
NTPC	55,564,800	78,331,200	40.97	128.80	-3.12
Long Unwinding ↓ Open Interest ↓ Price					
Script	Prev. OI	Cur. OI	% Chg. OI	LTP	Price % Chg
MUTHOOTFIN	2,281,500	2,194,500	-3.81	596.40	-0.55
CESC	1,521,850	1,461,900	-3.94	727.60	-1.97
ALBK	23,088,000	21,944,000	-4.95	54.35	-2.25
AJANTPHARM	860,500	817,500	-5.00	1024.25	-0.33

Disclaimer:

The Information provided by SMS or in newsletter or in any document has been prepared by Shah Investor's Home Ltd (SIHL). The Information provided by SMS or in newsletter does not constitute an offer or solicitation for the purchase or sale of any financial instrument or as an official confirmation of any transaction. The information contained herein is from publicly available data or other sources believed to be reliable, but we do not represent that it is accurate or complete and it should not be relied on as such. SIHL or any of its affiliates/ group companies shall not be in any way responsible for any loss or damage that may arise to any person from any inadvertent error in the information contained in this report or SMS. This Information provided by SMS, reports or in newsletter is provided for assistance only and is not intended to be and must not alone be taken as the basis for an investment decision. The user assumes the entire risk of any use made of this information. Each recipient of this Information provided by SMS, report or in newsletter should make such investigation as it deems necessary to arrive at an independent evaluation of an investment in the securities of companies referred to in this information provided by SMS, report or in newsletter (including the merits and risks involved), and should consult his own advisors to determine the merits and risks of such investment. The investment discussed or views expressed may not be suitable for all investors. This information is strictly confidential and is being furnished to you solely for your information.

The information should not be reproduced or redistributed or passed on directly or indirectly in any form to any other person or published, copied, in whole or in part, for any purpose. The information provided by report or SMS is not directed or intended for distribution to, or use by, any person or entity who is a citizen or resident of or located in any locality, state, country or other jurisdiction, where such distribution, publication, availability or use would be contrary to law, regulation or which would subject SIHL and affiliates/ group companies to any registration or licensing requirements within such jurisdiction. The distribution of this Information provided by SMS or in newsletter in certain jurisdictions may be restricted by law, and persons in whose possession this Information provided by SMS or in newsletter comes, should inform themselves about and observe, any such restrictions. The information given or Information provided by SMS, report or in newsletter is as of the date of the issue date of report or the date on which SMS provided and there can be no assurance that future results or events will be consistent with this information. This information is subject to change without any prior notice. SIHL reserves the right to make modifications and alterations to this statement as may be required from time to time. However, SIHL is under no obligation to update or keep the information current.

Nevertheless, SIHL is committed to providing independent and transparent recommendation to its client and would be happy to provide any information in response to specific client queries. Neither SIHL nor any of its affiliates, group companies, directors, employees, agents or representatives shall be liable for any damages whether direct, indirect, special or consequential including lost revenue or lost profits that may arise from or in connection with the use of the information. Past performance is not necessarily a guide to future performance. The disclosures of interest statements incorporated in the Information provided by SMS, report or in newsletter are provided solely to enhance the transparency and should not be treated as endorsement of the views expressed in the report. The analyst for this report certifies that all of the views expressed in this report accurately reflect his or her personal views about the subject company or companies and its or their securities, and no part of his or her compensation was, is or will be, directly or indirectly related to specific recommendations or views expressed in this report.

About Us:

Shah Investor's Home Ltd (SIHL) is an ISO 9001:2008 Certified financial Services Company established in 1994 at Ahmadabad, Gujarat. Customer satisfaction is guaranteed through our diversified product portfolio, professional management and customer first attitude. SIHL was the first broking house in Gujarat with membership in National Securities Depository Ltd (NSDL) and was the first broking name providing services in NSE F&O in Ahmedabad. Today, SIHL ranks among the top most players in Gujarat in retail stock broking area with 45 branches, 350 franchisee across India and providing service to more than 1,25,000 clients.